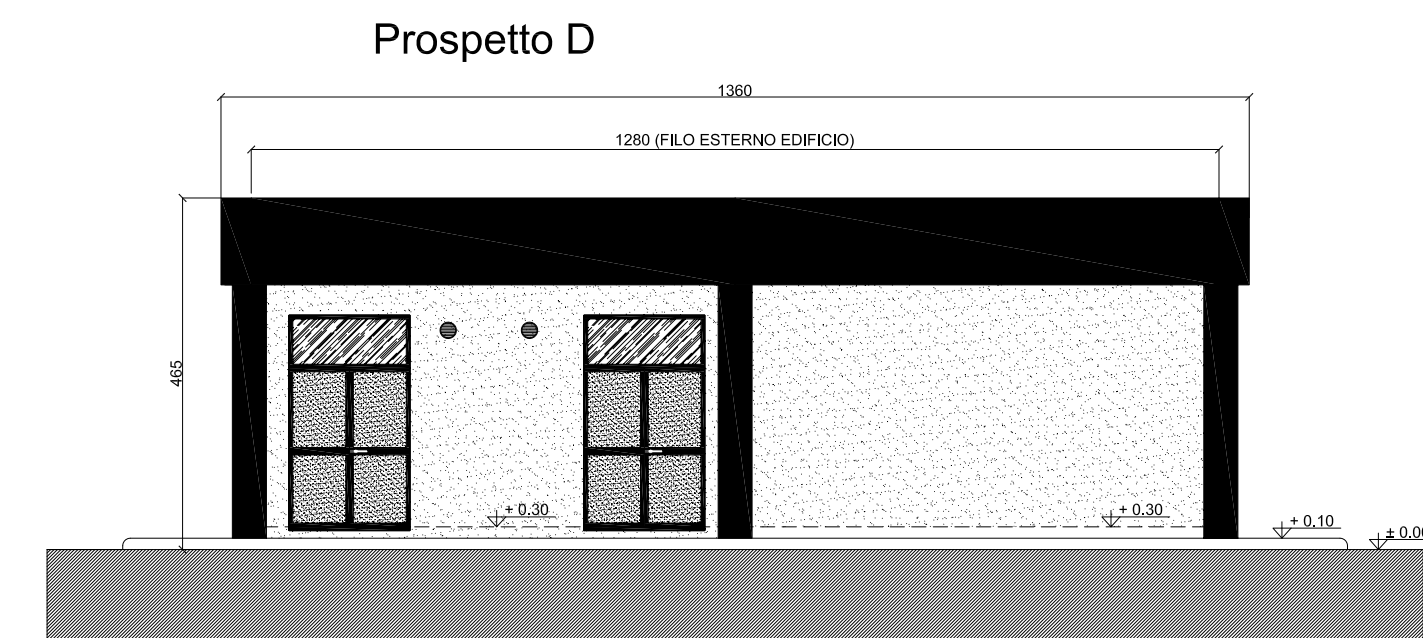
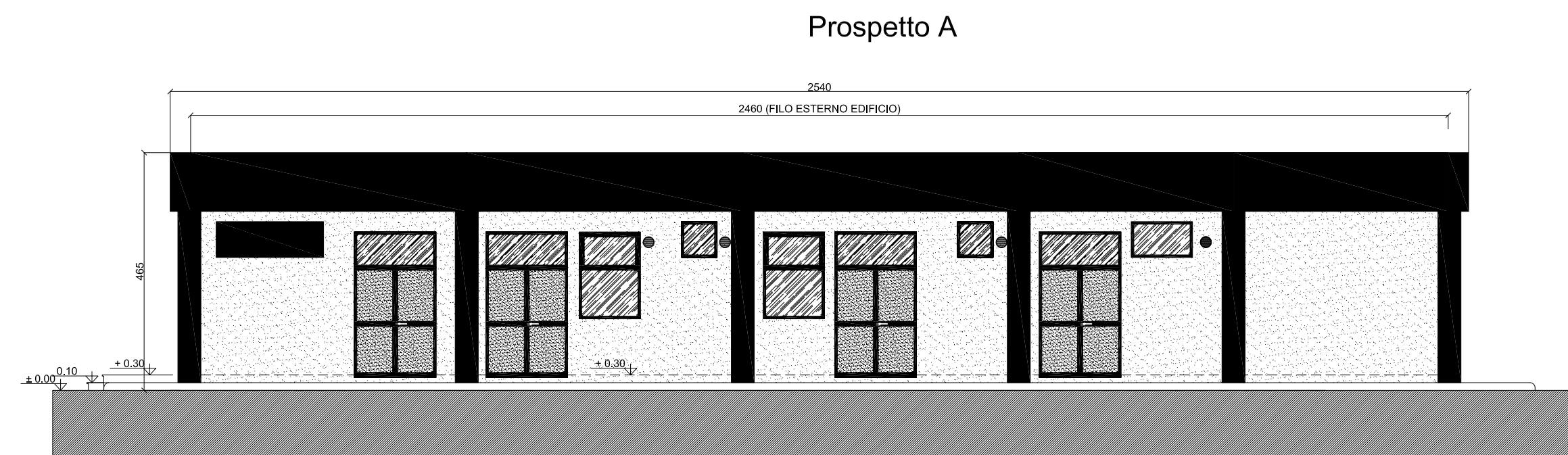
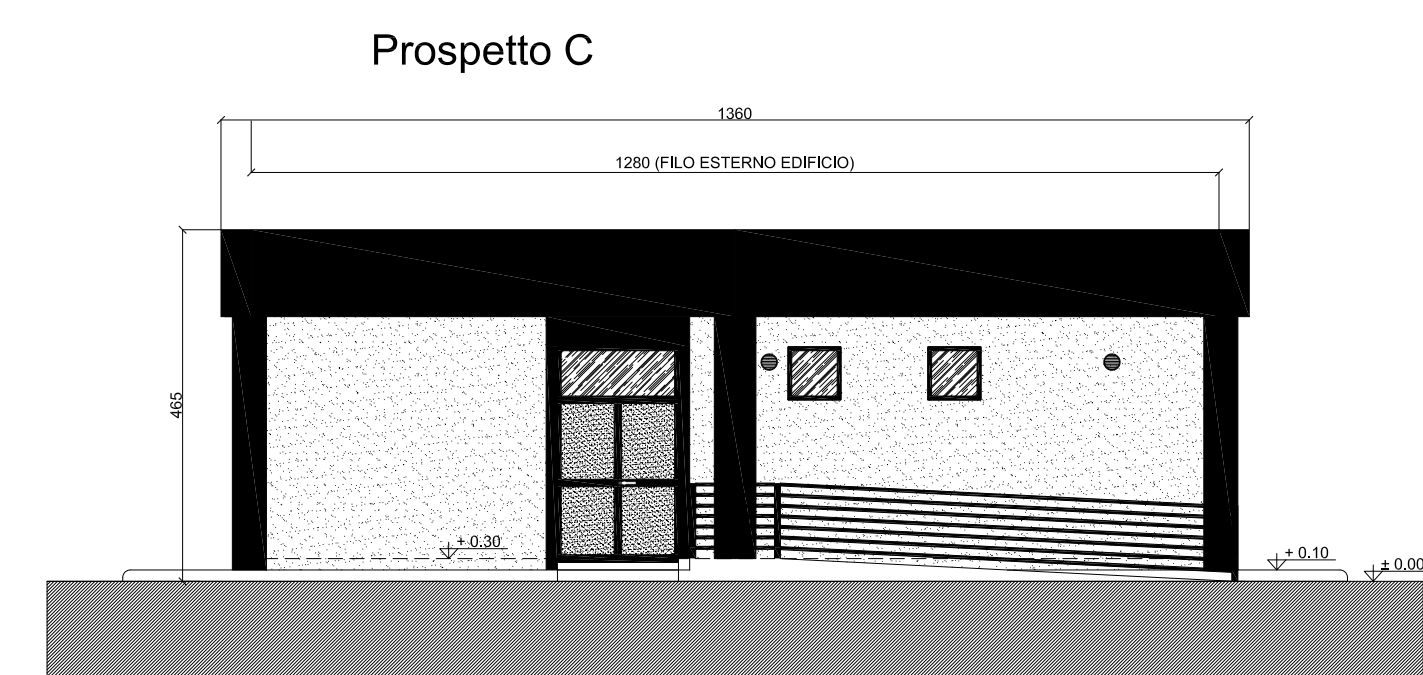
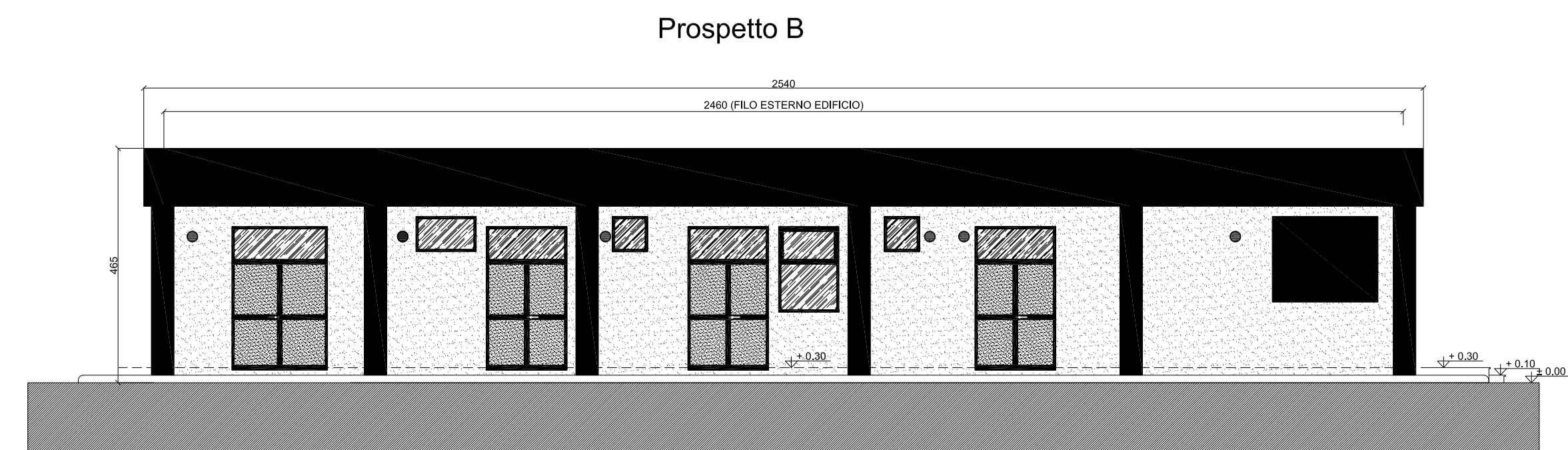
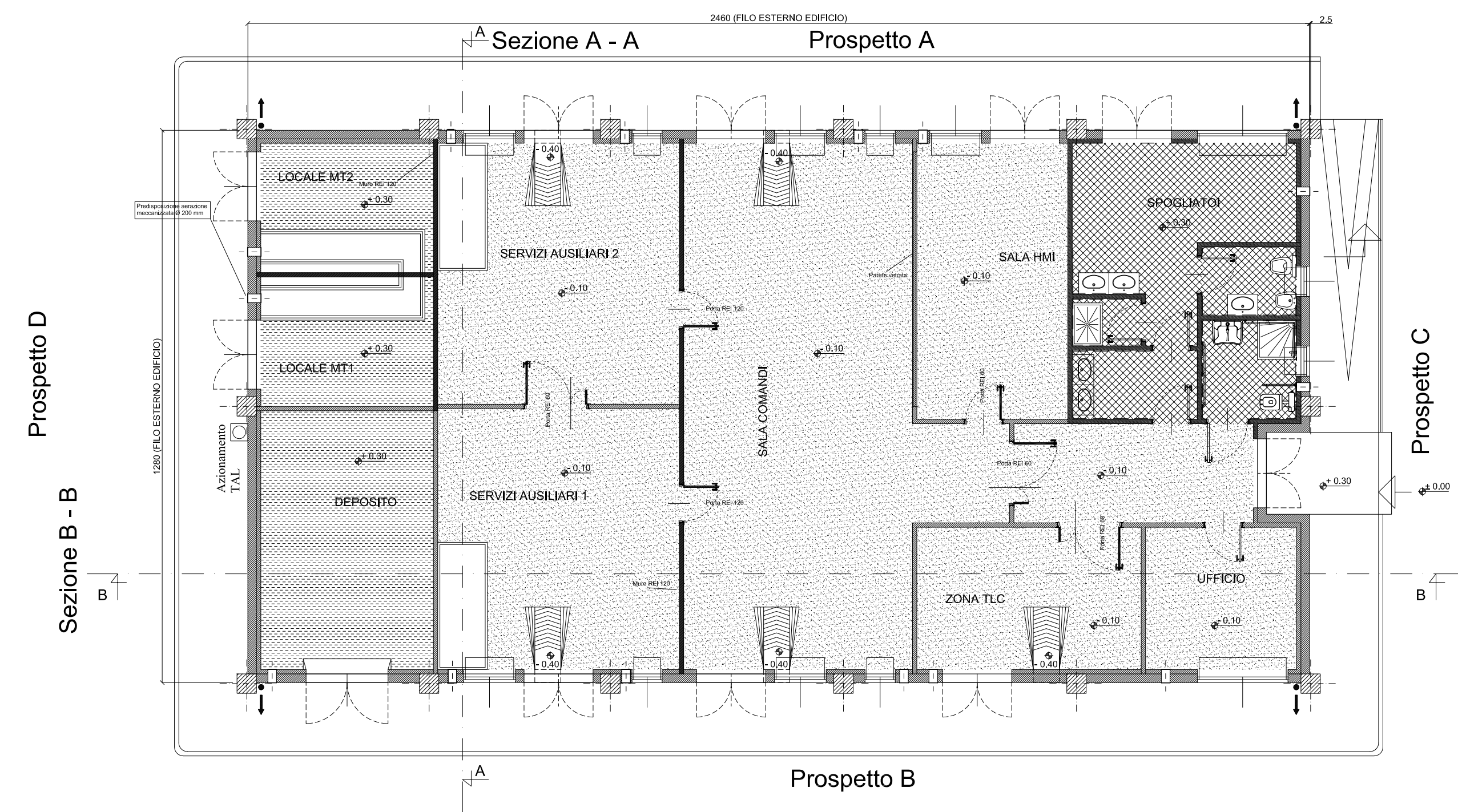
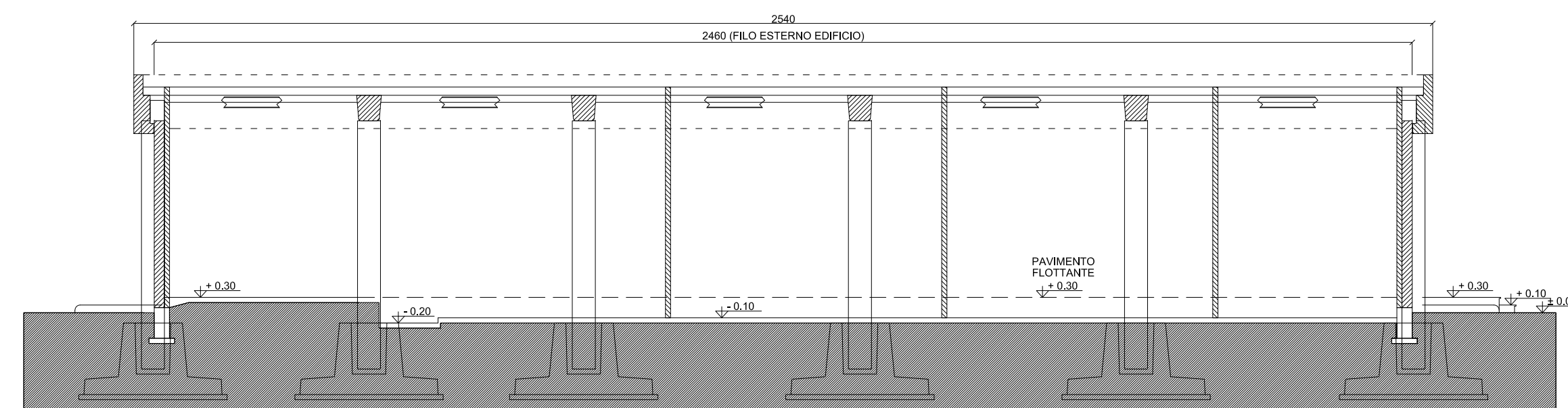
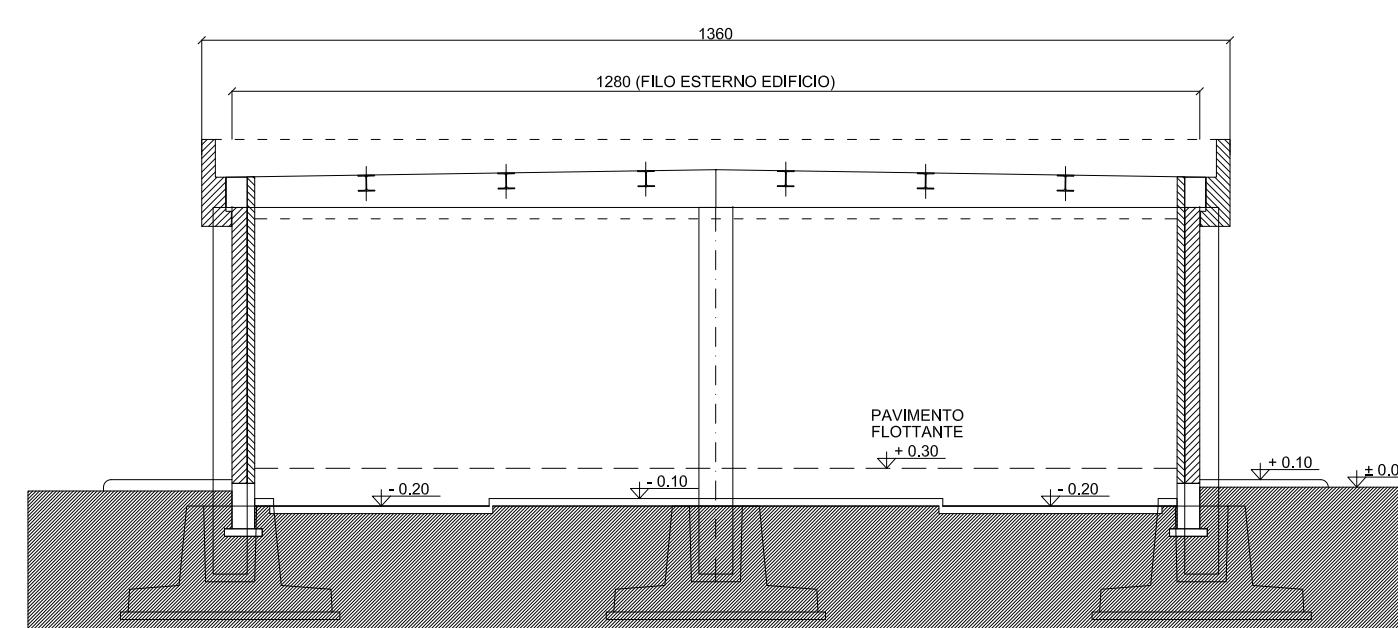
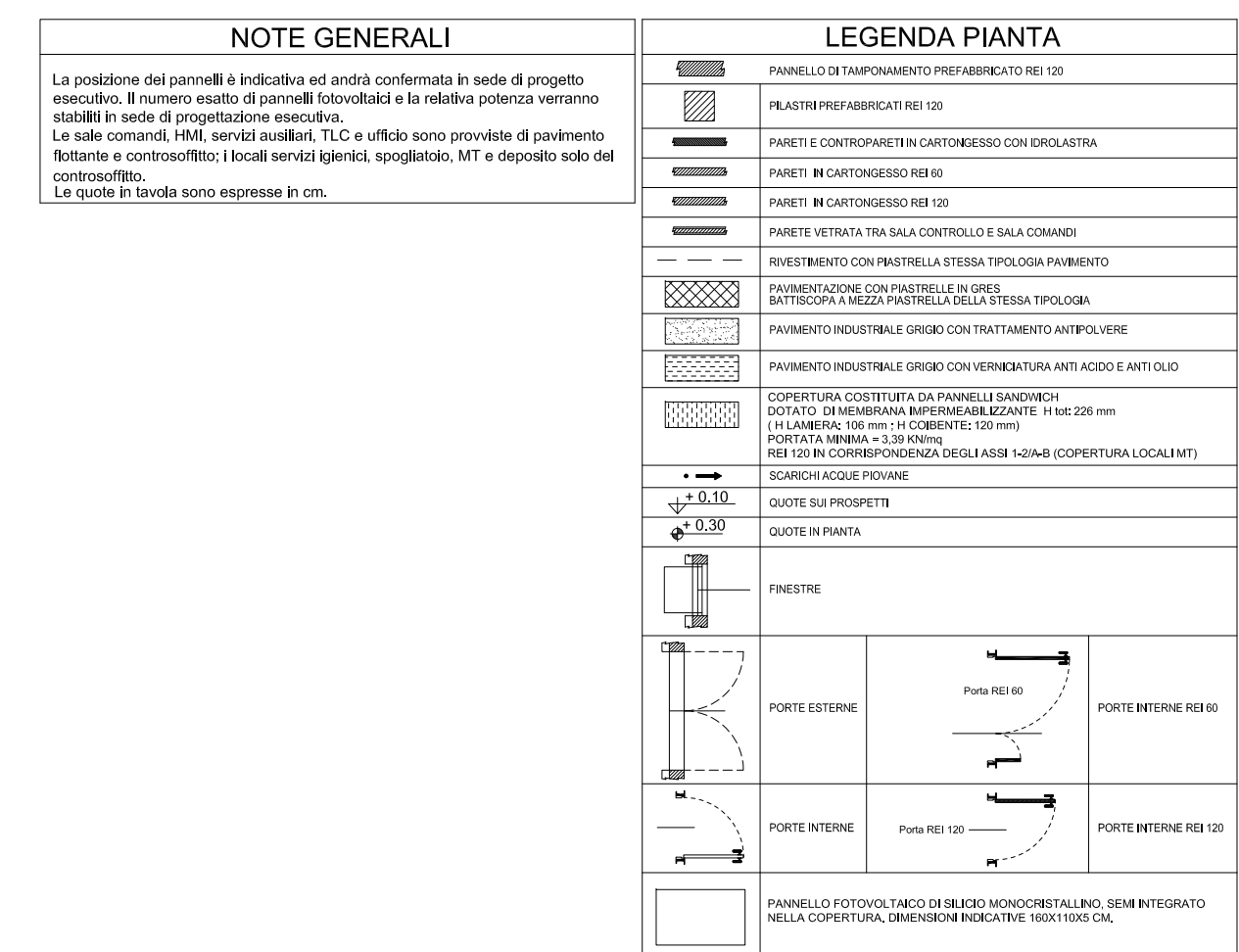
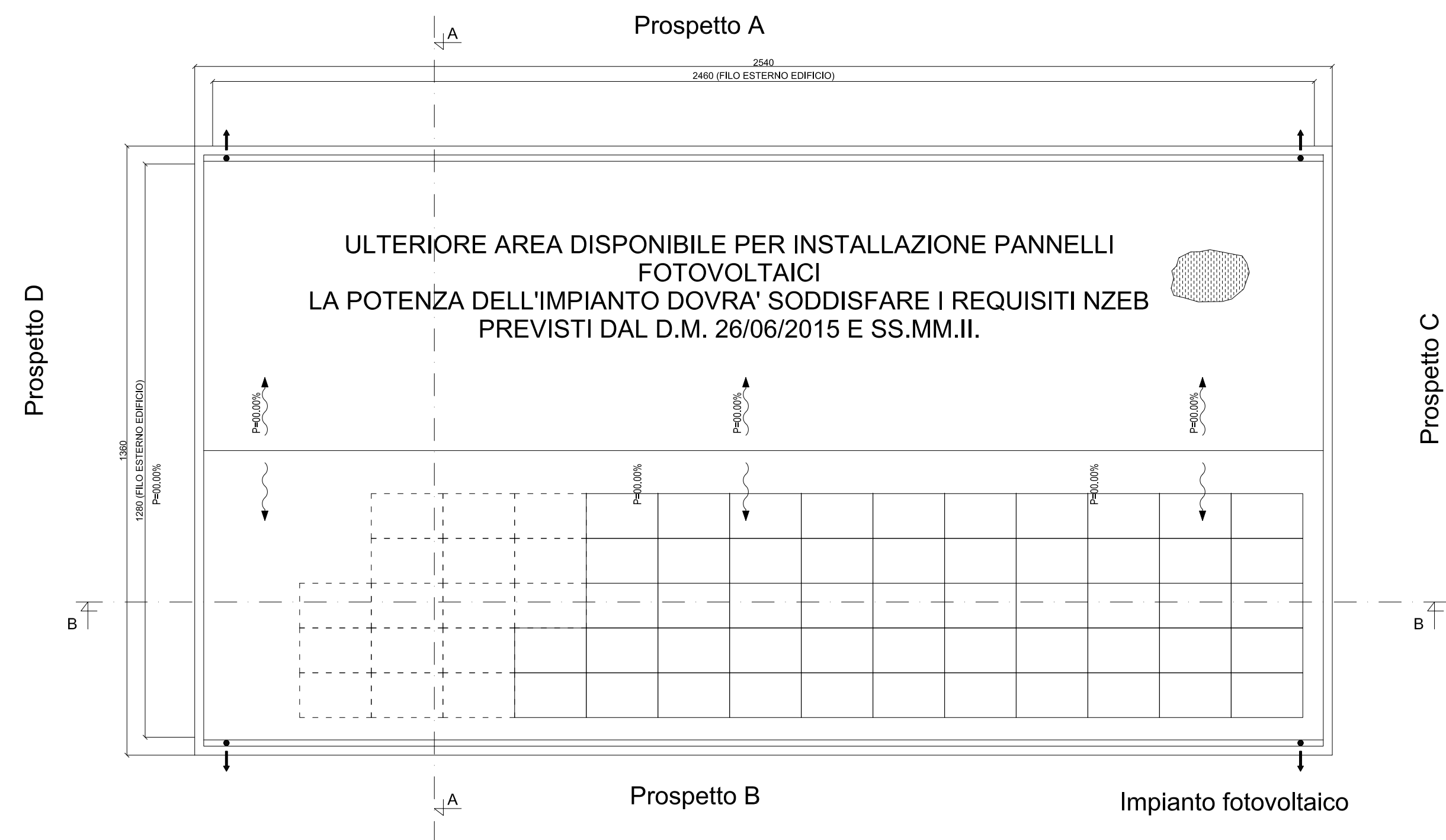
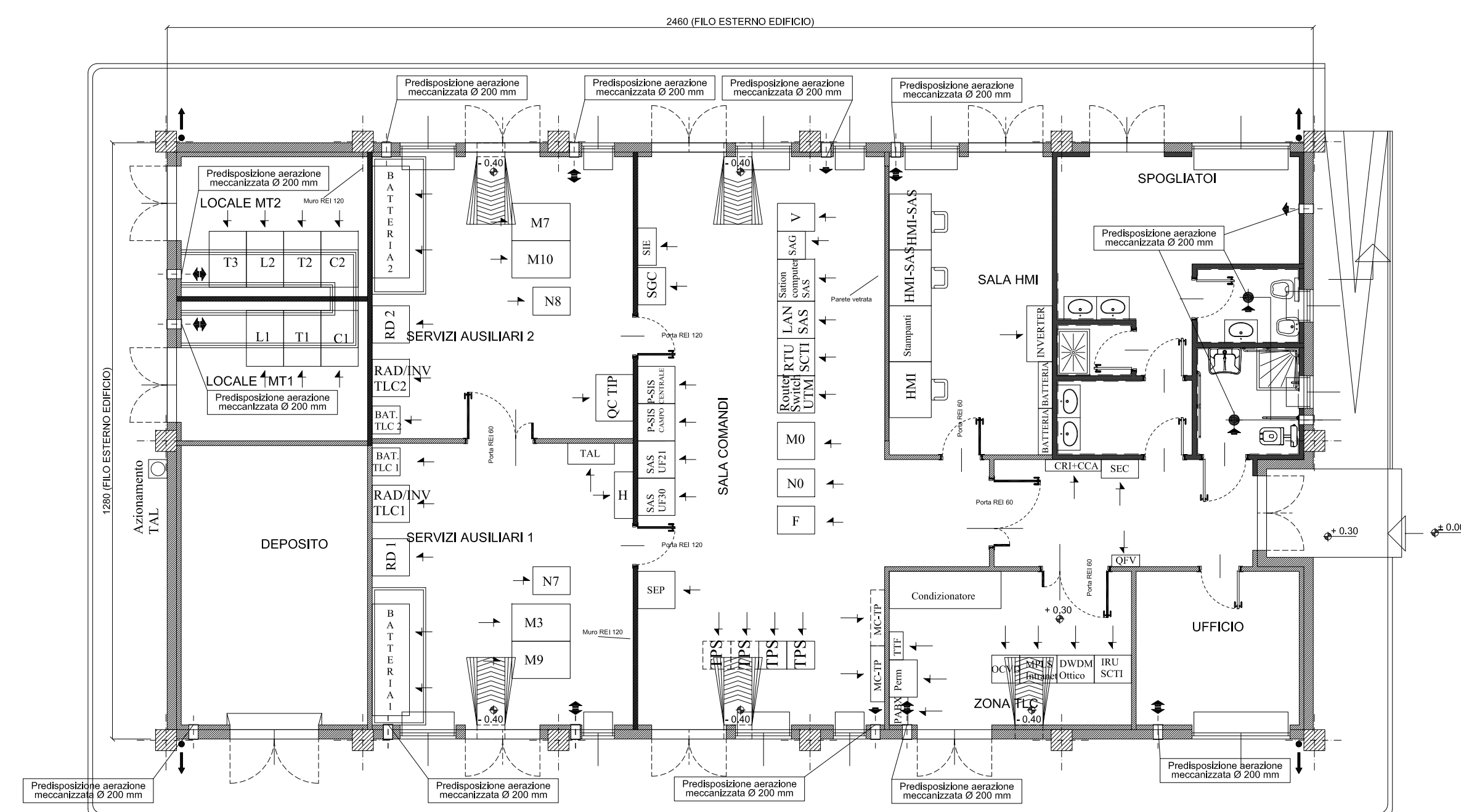


PIANTA ARCHITETTONICA



PIANTA IMPIANTISTICA



Nota: L'eventuale integrazione con i pannelli fotovoltaici rappresentati con un tratteggio dovrà essere valutata in fase di progettazione esecutiva al fine di massimizzare la producibilità dell'impianto fotovoltaico in relazione a fattori ambientali sitospecifici.

[illegible]